



## BASIC INFORMATION

### /// VENUE

|                           |  |
|---------------------------|--|
| <b>absolute room size</b> | width 13m<br>depth 27m<br>height 5,6m<br>clearance 4,8m              |
| <b>capacity</b>           | standing: 1000 people<br>seated: 370 people                          |
| <b>stage</b>              | 8m x 3-6m x 0,8m (w x d x h)<br>Clearance 3,75 (rig), 2,95m (lights) |
| <b>merch fee</b>          | at unseated/standing concerts: 80€ + vat.                            |

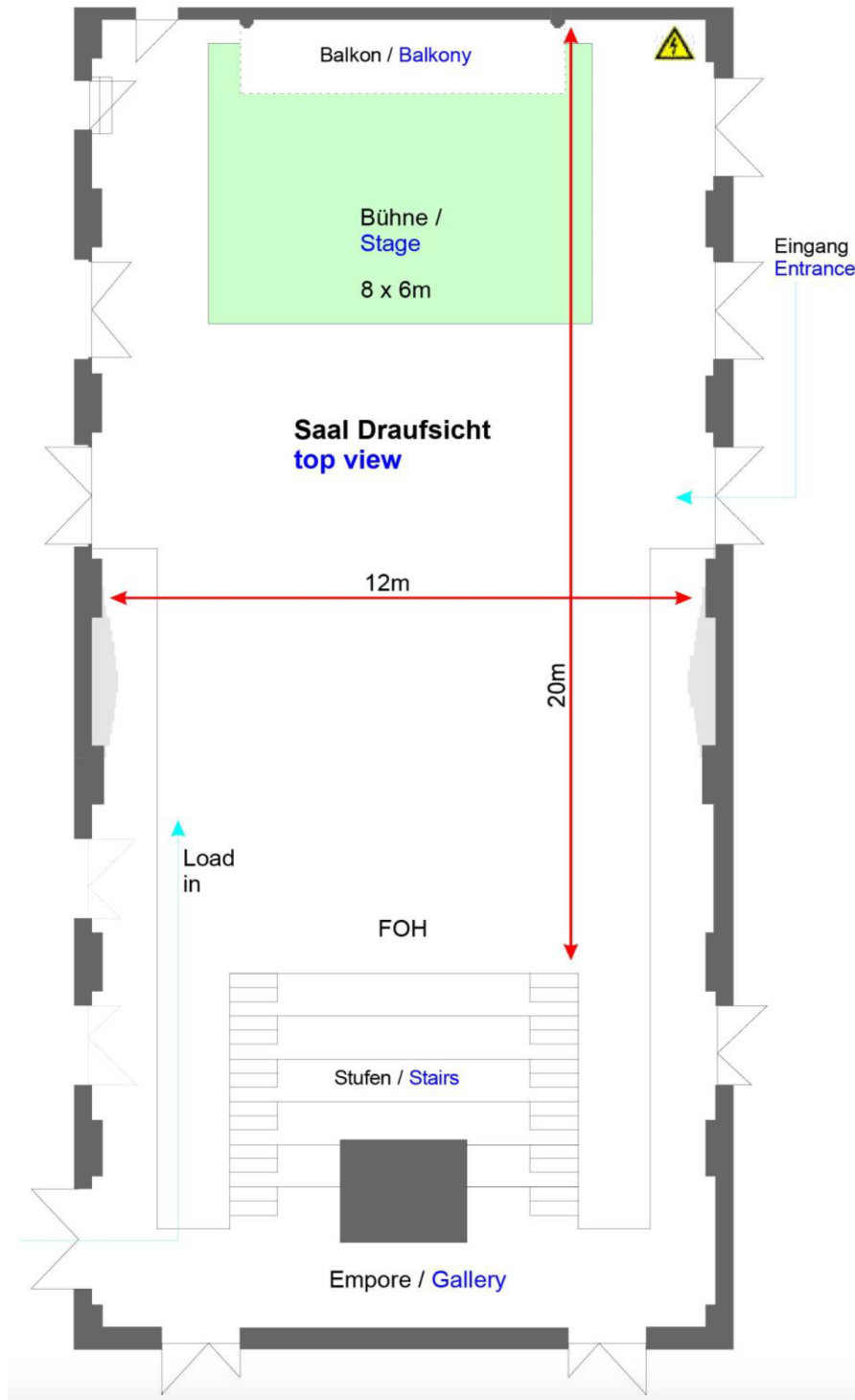
### /// BACKSTAGE

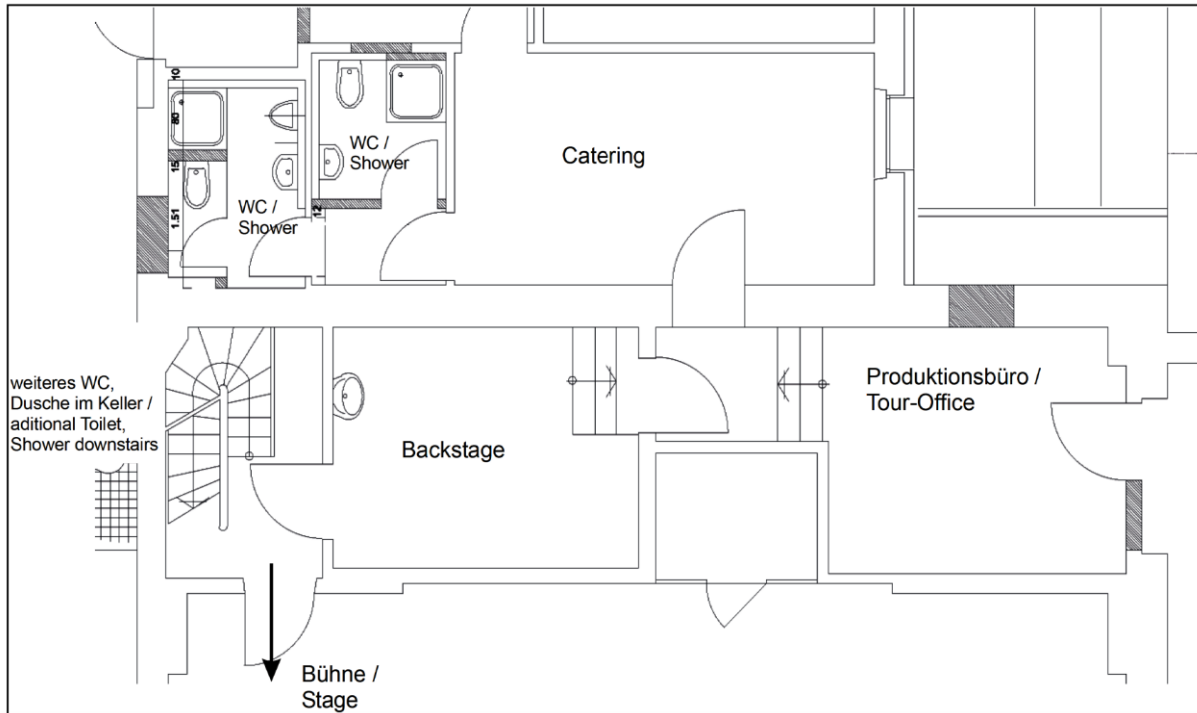
|                          |   |
|--------------------------|---|
| <b>lounge</b>            | 11m <sup>2</sup><br>fridge, sofa & seats, hot & cold water, mirror, free WiFi |
| <b>kitchen</b>           | 16m <sup>2</sup><br>big table & chairs, fridge, stove, dishwasher, free WiFi  |
| <b>production office</b> | 11m <sup>2</sup><br>long desk, telephone, free WiFi                           |
| <b>toilets</b>           | 2   |
| <b>showers</b>           | 2   |

### /// PARK & LOAD

|                         |  |
|-------------------------|--|
| <b>parking</b>          | please use the parking lot „Kaufland“<br>for free parking we need the licence plate of your car in advance |
| <b>loading</b>          | about 25m – same level   |
| <b>nightliner power</b> | 32A 3ph. CEE   |

## /// FLOOR PLAN





## TECHNICAL INFORMATION

### /// SOUND

*To provide the best possible concert-experience for our audience we would like to request that the average sound-pressure-level during the show is maximum 99db(A) at the front of house.*

**main-PA speaker**      d&b audiotechnik  
Line-Array with 6 tops per side  
10x d&b Y8  
02x d&b Y12  
08x d&b V-GSUB

**main-PA amps**      03x d&b D20  
01x d&b D80

**main-PA signal**      PA via left-right or left-right-sub  
Analog (XLR)  
Digital AES/EBU (XLR)  
Dante (96 kHz)

**FOH desk**      01x Allen & Heath S5000 incl. Dante Card  
*On request: Allen & Heath C3500, SQ5/7*

# /// VENUE SHEET - SAAL



KULTURZENTRUM  
E-WERK  
Erlangen

**stagebox** 01x Allen & Heath DM48 Dante

**monitor desk** *on request*

**monitoring speaker** 08x d&b MAX15

**monitoring amps** 01x LAB Gruppen iP2100 bundle 8ch.  
(incl. 04x LAB gruppen iP2100)

**multicore system** 04x CAT 6a  
40/12 analog

**microphones** Shure SM58, SM57, Beat52A, Beta91A, SM81  
Sennheiser e606, e604  
Oktava MK012, MK219  
BSS AR133  
*other microphones on request*

**stands** 01x K&M bassdrum-stand, ultra-small, heavy  
10x K&M stand tall  
08x K&M stand small  
02x K&M stand with round base

**power supply sound stage** 01x 32A CEE, 3ph  
01x 16A CEE, 3ph  
01x 16A CEE, 1ph  
02x 16A Schuko, 1ph

**power supply sound FOH** 01x 16A Schuko, 1ph

## /// LIGHTING

**stage lights** 12x Clay Paky A.leda B-Eye K10  
10x Clay Paky Axcor Spot 400  
04x Martin Atomic 3000 DMX  
06x 2-Light Blinder DWE  
04x 4-Light Blinder DWE  
02x PAR64 six-bar  
01x ACL batten 2x4 PAR36

**front lights** 06x Arri ST1 p.o.  
06x ETC Source4 Zoom 25-80° incl. iris

**side lights** 04x Arri ST1 p.o.  
(1 at each position: USL, USR, DSL, DSR)

# /// VENUE SHEET - SAAL



KULTURZENTRUM  
E-WERK  
Erlangen

|   |  |
|---|--|
| <b>haze / smoke</b>                       | 01x Smoke Factory tour Hazer II<br>02x Look viper 2.6 with rigging-gear (dancefloor)   |
| <b>dancefloor lights<br/>(disco only)</b> | 08x JB-Lighting A4 LED<br>08x Elation platinum spot II LED<br>02x Elation platinum beam 5R<br>02x Martin Atomic 3000 DMX       |
| <b>house lights</b>                       | ERCO-LED system, dimmable via DMX  |
| <b>lighting desk</b>                      | MA-Lighting grandMA3 lite  |
| <b>DMX universe</b>                       | only via MAnet or ARTnet<br>5 universes  |
| <b>dimming system</b>                     | MA-Lighting dimMA compact System 132 Ch.<br>132x10A dimmer channels<br>Schuko & Harting connectors spread over the whole venue |
| <b>power supply lights<br/>stage</b>      | 02x 63A CEE, 3ph<br>02x 32A CEE, 3ph<br>02x 16A CEE, 3ph<br>06x 16A Schuko, 1ph  |
| <b>power supply lights<br/>FOH</b>        | 01x 16A Schuko, 1ph  |

## /// VIDEO

|                  |  |
|------------------|--|
| <b>projector</b> | 01x Panasonic PT-MZ880<br>8000 ANSI, WUXGA (1900x1200)<br>input HDMI   |
| <b>screen</b>    | 01x AV Stumpfl Vario32 540x310 (back of stage)<br>01x AV Stumpfl Vario32 365x210 (back of stage)<br>01x ceiling-installed motorscreen 6x4m (at 3m) |



## CONTACT

### /// VENUE

**address** E-Werk Kulturzentrum GmbH  
Fuchsenwiese 1  
91054 Erlangen  
Germany

**phone** +49 (0)9131 8005 0

**fax** +49 (0)9131 8005 10

**mail** info@e-werk.de

### /// DEPARTMENTS

**booking** Holger Watzka  
holger.watzka@e-werk.de  
+49 (0)9131 8005 54

**venue rental** Johanna Sachse  
johanna.sachse@e-werk.de  
+49 (0)9131 8005 14

**house technic** Andreas Drechsler  
andreas.drechsler@e-werk.de  
+49 (0)9131 8005 57

**event technology** Sebastian Simons  
sebastian.simons@e-werk.de  
+49 (0)9131 8005 20